

TO: JAMES L. APP, CITY MANAGER
FROM: DITAS ESPERANZA, CITY ENGINEER *DE*
SUBJECT: REQUEST TO REMOVE OAK TREES
DATE: JANUARY 4, 2000

Needs: For the City Council to consider approving a request to remove four (4) 8-inch diameter oak trees.

- Facts:**
1. Tentative Tract 2311 (Serenade) is an approximately 49-acre property located east of S. River Road and south of Niblick Road.
 2. The Tentative Tract was approved to allow the developer to subdivide the property into 72 single family lots.
 3. In July 1999, the City Council approved the removal of 14 oak trees. Thirteen of these trees have been removed.
 4. The City has received a request to remove four additional 8-inch diameter oak trees in order to build a house on Lot 3.

Analysis and

Conclusion: The applicants states they have tried all options to save the trees but were unable to arrive at a solution to save them.

Policy

Reference: Oak Tree Ordinance
Resolution No. 99-38 (approving the tentative map)

Fiscal

Impact: None

- Options:**
- A. That the City Council adopt the attached Resolution, authorizing the removal of four (4) additional oak trees for Tentative Tract 2311.
 - B. That the City Council amend, modify or reject the above option.

Attachments: (3)

- 1) Resolution
- 2) Letter from applicant
- 3) Photos

RESOLUTION NO. 00-

A RESOLUTION OF THE CITY COUNCIL OF THE CITY OF PASO ROBLES,
CALIFORNIA, TO REMOVE FOUR (4) ADDITIONAL OAK TREES AS PART OF THE
DEVELOPMENT OF TENTATIVE TRACT 2311 (SERENADE)

WHEREAS, the City Council approved Tentative Tract 2311 to subdivide a 49-acre site into 72 single family dwelling units; and

WHEREAS, the developer has submitted an Oak Tree Inventory Report which concluded that there are 118 oak trees within the property; and

WHEREAS, the City Council had previously approved the removal of fourteen (14) oak trees; and

WHEREAS, the applicant is now requesting that four (4) additional 8-inch diameter oak trees be approved for removal.

THEREFORE, BE IT RESOLVED AS FOLLOWS:

SECTION 1. That the City Council of the City of Paso Robles does hereby give permission to remove 4 additional 8-inch diameter oak trees as part of the development of Tentative Tract 2311 (Serenade).

SECTION 2. That the developer is required to install two (2) 24-inch box oak trees (1 ½ inch minimum caliper for each oak tree removed greater than 3-inches in diameter).

PASSED AND ADOPTED by the City Council of the City of Paso Robles, this 4th day of January, 2000, by the following vote:

AYES:

NOES:

ABSENT:

ABSTAIN:

Duane Picanco, Mayor

ATTEST:

Sharilyn M. Ryan, Deputy City Clerk



3248 Roblar Ave. ▲ Santa Ynez, CA 93460
805/693-0132 ▲ fax: 805/693-0182

RECEIVED

DEC 17 1999

DEPT. OF PUBLIC WORKS

December 15, 1999

Ditas Esperanza
City Engineer
City of Paso Robles
1000 Spring Street
Paso Robles, Ca 93446

Re: Tract 2311, Serenade

Dear Ditas:

We have discovered three additional oak trees which need to be removed in order to build Lot 3 in our subdivision. This will bring the total number of trees removed to 17. At this time, we have removed a total of 13 of the 14 oaks we have been approved to remove. You can see on the attached diagram, that the retaining wall as shown on the plan cannot be built without the removal of four oak trees. We have now completely graded the entire site, and we see no additional oaks to be removed. We regret having to again ask the City Council to consider this matter, but I am sure you can understand with a site this large, and so many oaks on the slopes, that until the grading actually occurred, it was difficult to try to visualize all potential conflicts.

We have tried rotating the home on this lot to avoid the need for the retaining wall entirely, as well as substituting another floorplan, however, the plan shown is the shallowest of all three of our floorplans, and no matter what we tried we were unable to come up with a solution which saved the oaks.

Very truly yours,

Camille C. Politte
President

CHC :ms

256
12/18/99

TREE PROTECTION FENCING (TYPICAL)

PROGRESSIVELY STEP DOWN TOP OF FOOTING PER DET.

PROGRESSIVELY STEP UP TOP OF FOOTING PER DET.

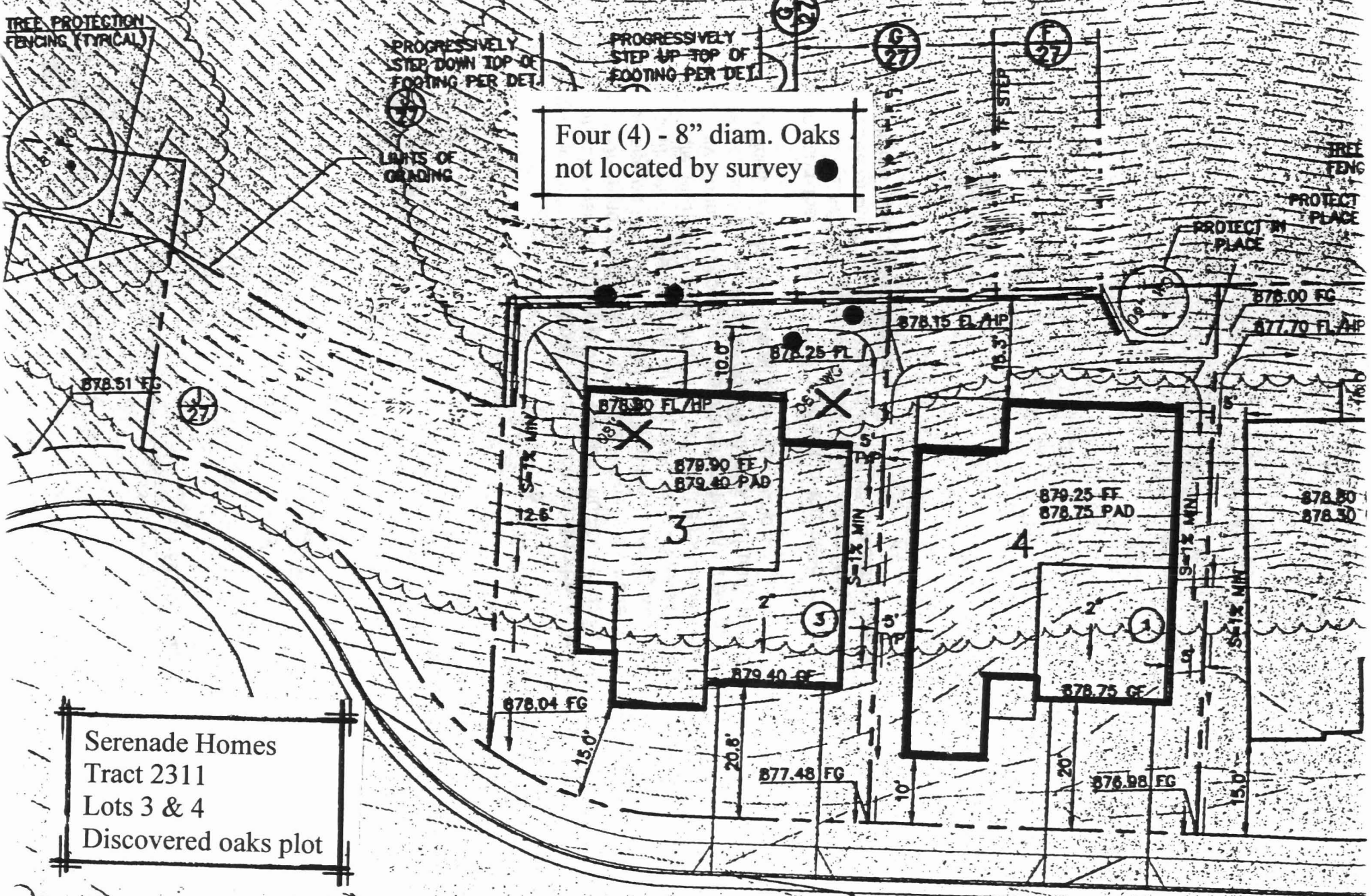
LIMITS OF GRADING

Four (4) - 8" diam. Oaks not located by survey ●

TREE FENCING

PROTECT IN PLACE

PROTECT IN PLACE



Serenade Homes
Tract 2311
Lots 3 & 4
Discovered oaks plot

